





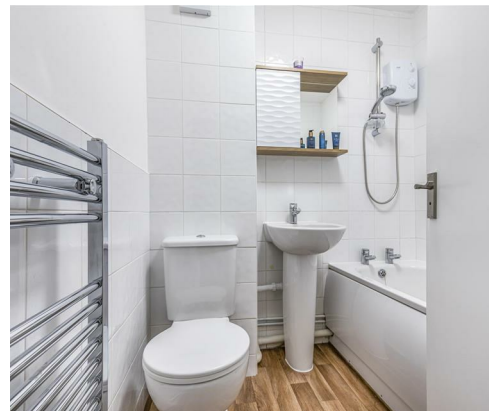
Located just a short walk from the marina and Southsea seafront, this spacious 2-bedroom family flat offers comfortable coastal living in a sought-after location.

Positioned on Ferry Road, the flat features a good sized living area, perfect for relaxing or entertaining. Offered unfurnished, it gives you the freedom to style your home just the way you like it.

An allocated parking space is included which is a rare bonus in this area, adding convenience to your day-to-day life.

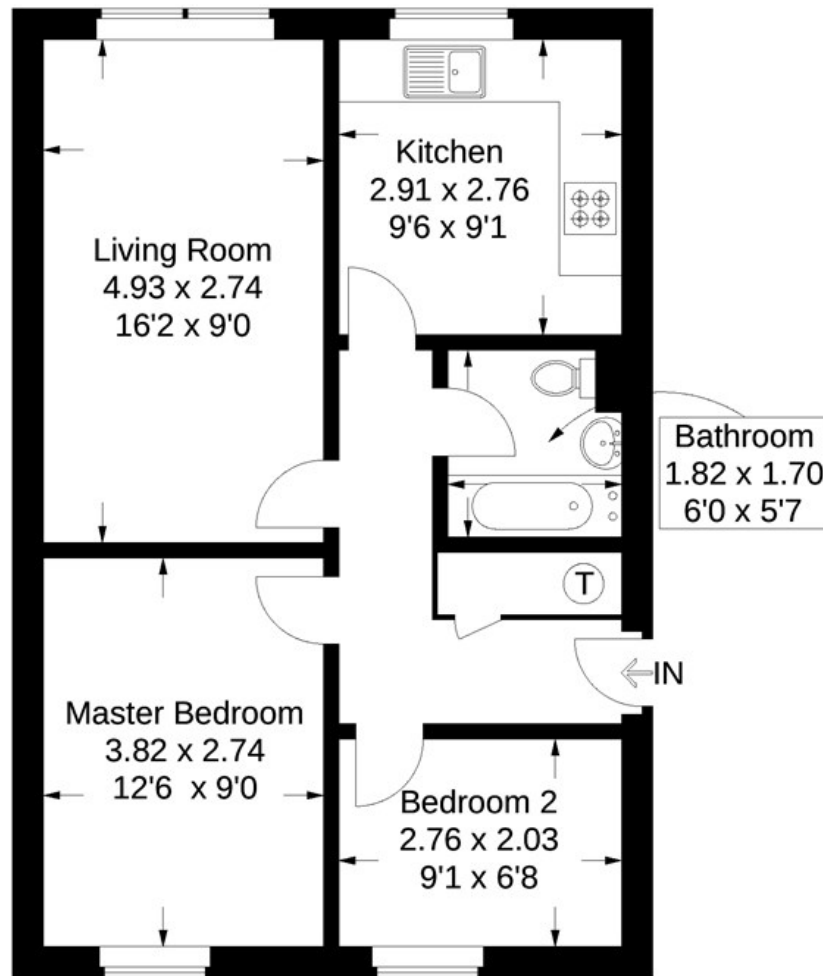
For more details or to arrange a viewing, contact Amy at NEXA today!

- ALLOCATED PARKING SPACE
- TWO BEDROOMS
- QUIET SEASIDE LOCATION
- GROUND FLOOR
- 1 DOUBLE, 1 SINGLE BEDROOM
- AVAILABLE FROM AUGUST
- VISITOR PARKING AVAILABLE



Ferry Road, Southsea

Approximate Gross Internal Area = 50.5 sq m / 544 sq ft



Ground Floor

This plan is for layout guidance only. Not drawn to scale unless stated. Windows and door openings are approximate. Whilst every care is taken in the preparation of this plan, please check all dimensions, shapes and compass bearings before making any decisions reliant upon them.